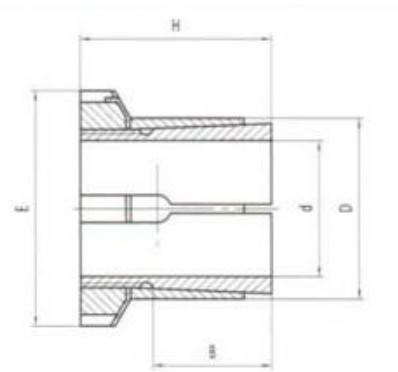


## Z19B 型胀套 Z19B type locking assemblies



基本尺寸和参数 Basic dimensions and parameters of the locking assemblies, type Z19B

规格 sizes×D	基本尺寸 Basic dimensions					圆螺母 Roundnut		额定负荷 Rated load		Pf N/mm <sup>2</sup>	Pf N/mm <sup>2</sup>	G(kg)
	d	D	E	H	B	规格 ch sizes	MA N.m	Mt N.m	Ft KN			
	mm											
14x25	14	25	32	30	20	M22x1	95	64	9.1	85	45	0.08
15x25	15	25	32	30	20	M22x1	95	70	9.1	80	45	0.08
16x25	16	25	32	30	20	M22x1	95	73	9.1	75	45	0.07
17x25	17	25	32	32	20	M22x1	95	80	9.1	70	45	0.07
18x30	18	30	32	32	20	M22x1	95	83	9.1	65	40	0.12
19x30	19	30	38	32	20	M25x1.5	160	105	11.0	75	45	0.11
20x30	20	30	38	32	20	M25x1.5	160	112	11.0	70	45	0.10
22x35	22	35	45	36	25	M30x1.5	220	163	14.5	70	45	0.17
24x35	24	35	45	36	25	M30x1.5	220	178	14.5	65	45	0.15
25x35	25	35	45	36	25	M30x1.5	220	185	14.5	60	45	0.14
28x40	28	40	52	42	30	M35x1.5	340	250	14.5	55	40	0.22
30x40	30	40	52	42	30	M35x1.5	340	270	17.5	50	40	0.19
32x42	32	42	52	44	30	M36x1.5	340	350	21.5	60	45	0.20
32x45	32	45	58	44	30	M40x1.5	480	350	21.5	60	45	0.27
35x45	35	45	58	44	30	M40 x 1.5	480	390	21.5	55	45	0.22
38x50	38	50	65	45	30	M45x1.5	680	500	26.0	60	45	0.30
40x50	40	50	65	45	30	M45 x 1.5	680	520	26.0	60	50	0.25
45x55	45	55	70	46	30	M50 x 1.5	870	680	30.0	60	50	0.29
48x60	48	60	75	46	30	M55 x 1.5	970	840	35.0	60	50	0.37
50x60	50	60	75	46	30	M55 x 1.5	970	880	35.0	60	50	0.32
55x65	55	65	80	46	30	M60x1.5	1100	1030	37.5	60	50	0.34
60x70	60	70	85	52	20	M65x1.5	1300	1360	45.0	65	55	0.42