

产品结构特性与性能

Product structure characteristics and performance

PB 结构



- 1.最大转速: $\leq 1000\text{RPM}$
Max.speed: $\leq 1000\text{RPM}$
- 2.最大静扭矩: $\leq 5000\text{N.m}$
Static breaking torque: $\leq 5000\text{N.m}$
- 3.最大工作角 45°
Max.working angle 45°

- 1.最大转速: $\leq 1300\text{RPM}$
Max.speed: $\leq 1300\text{RPM}$
- 2.最大静扭矩: $\leq 2000\text{N.m}$
Static breaking torque: $\leq 2000\text{N.m}$
- 3.最大工作角 45°
Max.working angle 45°

PR结构



NB结构



- 1.最大转速: $\leq 2500\text{RPM}$
Max.speed: $\leq 2500\text{RPM}$
- 2.最大静扭矩: $\leq 2000\text{N.m}$
Static breaking torque: $\leq 2000\text{N.m}$
- 3.最大工作角 45°
Max.working angle 45°

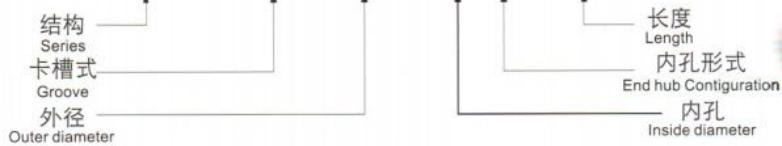
- 1.最大转速: $\leq 4000\text{RPM}$
Max.speed: $\leq 4000\text{RPM}$
- 2.最大静扭矩: $\leq 3000\text{N.m}$
Static breaking torque: $\leq 3000\text{N.m}$
- 3.最大工作角 45°
Max.working angle 45°

CN结构

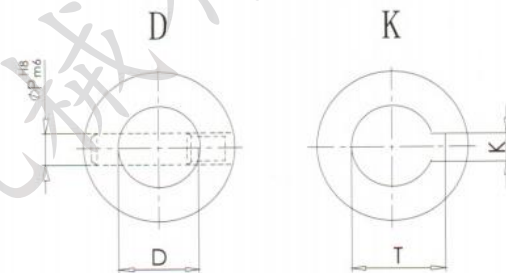
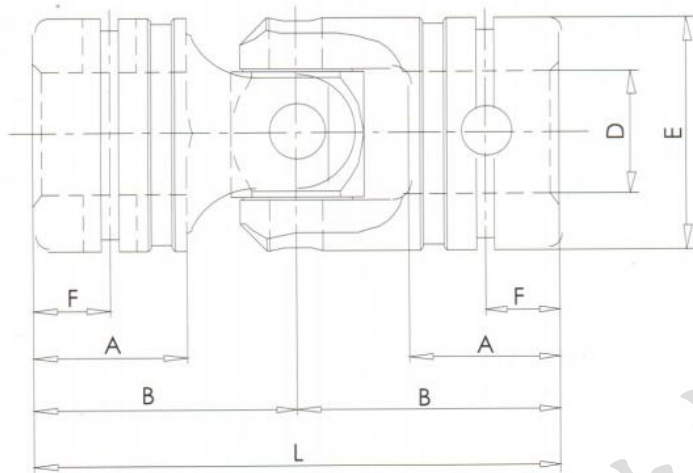


订货范例
Example

PR-HCS23-12D-52



HCS



| 尺寸 型号规格 | D (H8) | E | L | B | A | F | P (H8) | K (JS9) | T |
|------------|--------|----|-----|------|----|------|--------|------------|------|
| HCS16 | 8 | 16 | 36 | 18 | 10 | 4.5 | 4 | 2 | 9 |
| HCS20 | 10 | 20 | 42 | 21 | 12 | 5 | 4 | 3 | 11.4 |
| HCS23 | 12 | 23 | 52 | 26 | 15 | 7 | 5 | 4 | 13.8 |
| HCS26 | 14 | 26 | 62 | 31 | 18 | 8.5 | 6 | 5 | 16.3 |
| HCS30 | 16 | 30 | 74 | 37 | 22 | 11 | 6 | 5 | 18.3 |
| HCS35 | 18 | 35 | 87 | 43.5 | 26 | 13 | 8 | 6 | 20.8 |
| HCS40 | 20 | 40 | 94 | 47 | 27 | 13.5 | 8 | 6 | 22.8 |
| HCS45 | 22 | 45 | 104 | 52 | 29 | 14.5 | 10 | 8 | 25.3 |
| HCS50 | 25 | 50 | 122 | 61 | 35 | 17.5 | 10 | 8 | 28.3 |